



## Royal Connaught Drive

, Bushey WD23 2RA

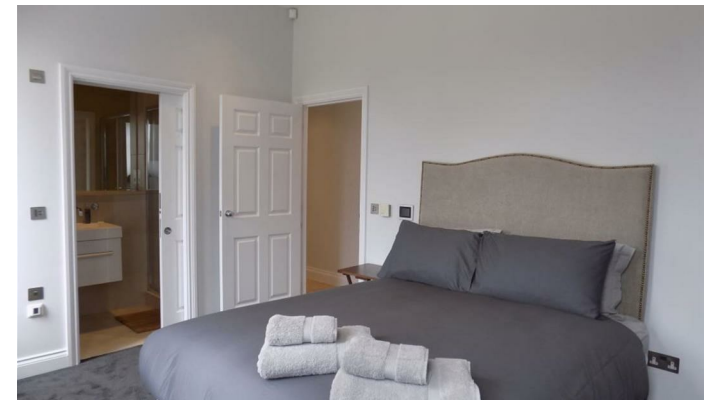
- Luxury first floor apartment
- Master bedroom with ensuite
  - Family bathroom
- 2 off-street parking spaces
- Leisure club with a gym
- Grade II Listed Building
  - 3 bedrooms
  - Available Now
- 24 hours gated security
- Swimming pool and tennis courts

**£3,000 PCM**

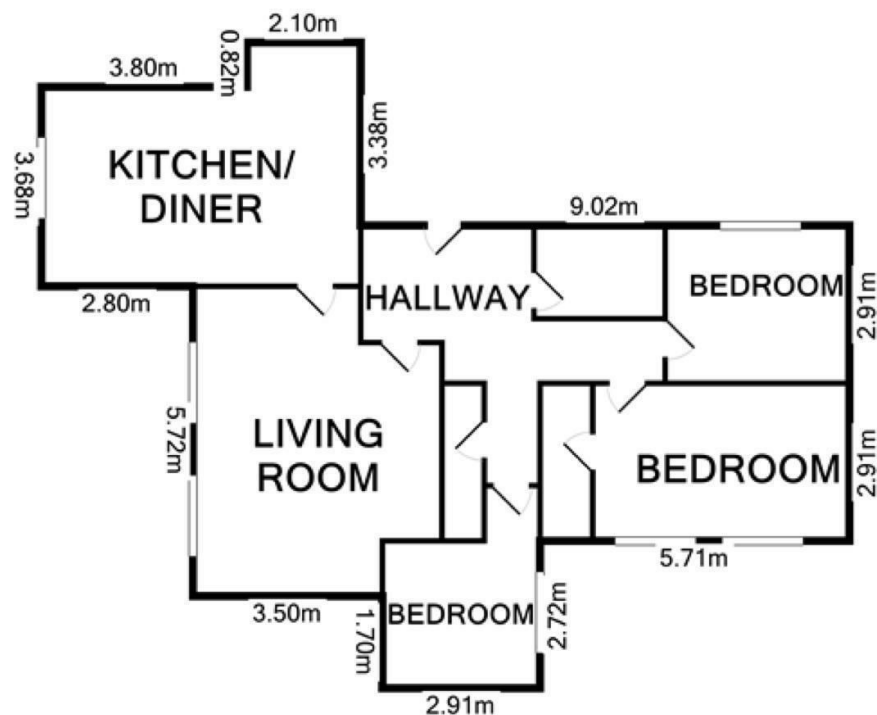


Location





Local Authority **Hertsmere**  
Council Tax Band **G**  
EPC Rating **C**



Made with Metropix ©2008

#### Mill Hill Office

Concorde House Grenville Place, Mill Hill,  
London, NW7 5SA

#### Contact

02035441561  
raphael@housemanhomes.co.uk  
www.houseman-properties.com

Agents Note: Whilst every care has been taken to prepare these particulars, they are for guidance purposes only. All measurements are approximate and for general guidance purposes only and whilst every care has been taken to ensure accuracy, they should not be relied upon and potential buyers/tenants are advised to recheck the measurements.

